



THE OGLE CENTER at Indiana University Southeast

RICHARD K. STEM CONCERT HALL

Named in recognition of Richard K. Stem, business and civic leader in Southern Indiana, for his contributions and leadership to the development and growth of Indiana University Southeast. Stem Concert Hall is the largest venue at the Ogle Center with seating for 500 including 12 accessible seating locations.

RENTAL PRICE LIST

for individuals and organizations not affiliated with Indiana University

RENTAL RATES

8-Hour* Rental

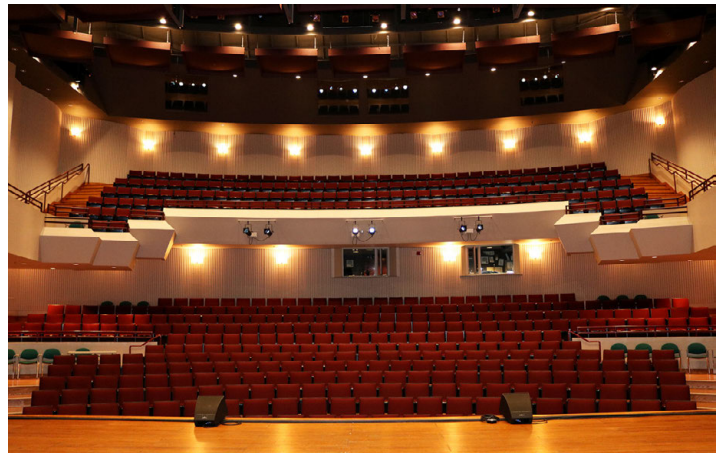
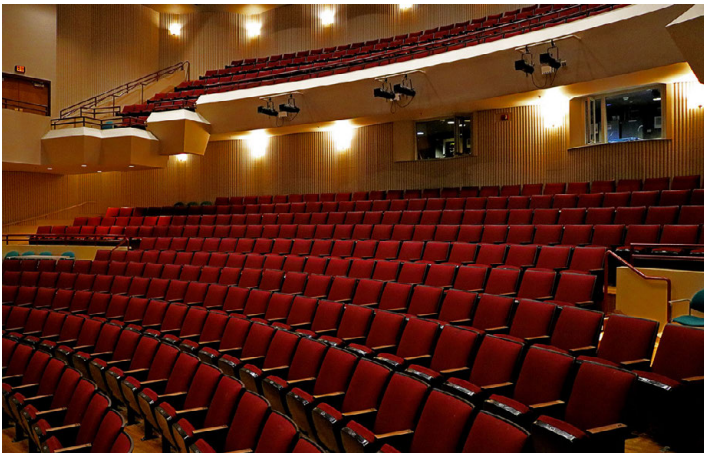
\$1,000**

* Additional rental hours \$75 per hour or portion thereof.

** Non-profit organizations receive 15% discount on rent with proof of Indiana State sales tax exemption (Form ST-105)

Equipment Included with Rental

- Standard stage lighting (no color wash)
- Eight (8) 8' rectangular tables
- Four (4) 6' rectangular tables
- 100 chairs for stage
- Limited number of music stands
- Gaffers tape (may be additional charge for excessive usage)
- Sound package includes six (6) SM58 handheld wireless microphones and four (4) monitors
- Lectern



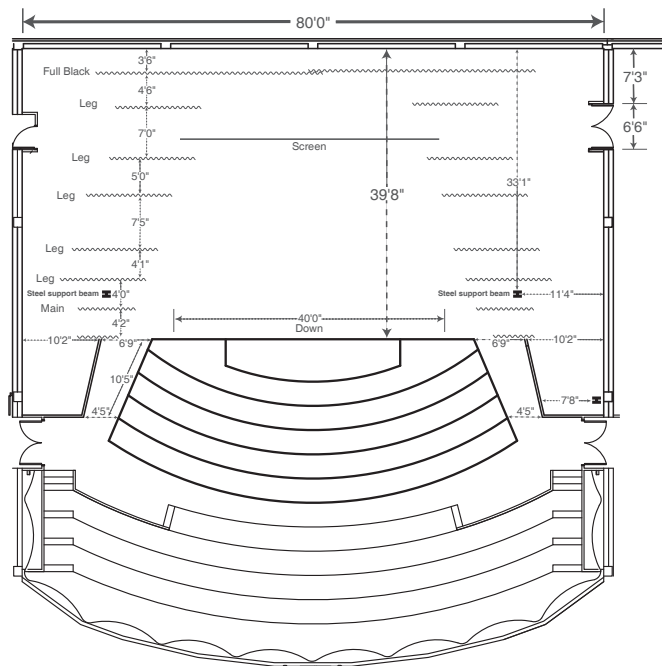
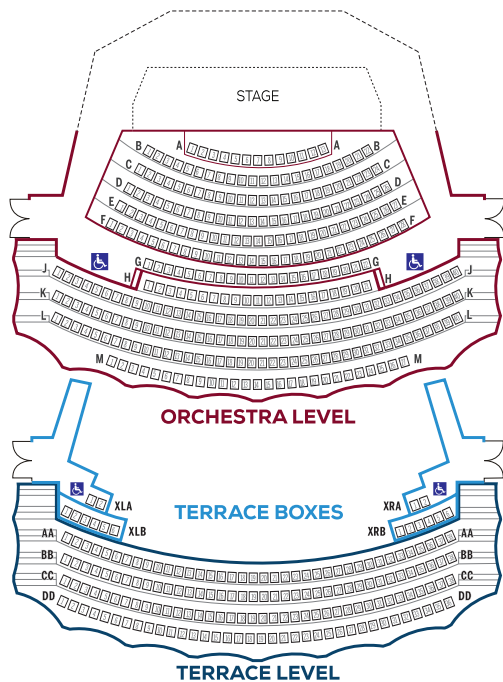
See reverse for additional charges and options.



OGLECENTER
PAUL W. OGLE CULTURAL & COMMUNITY CENTER
INDIANA UNIVERSITY SOUTHEAST

To reserve, please complete a venue request online at bit.ly/OgleVenue or send an email to oglemail@ius.edu

4201 Grant Line Road | New Albany, IN 47150 • oglecenter.com



USAGE AND BOX OFFICE CHARGE*

Day of Activity, *non*-ticketed event: **\$500**

Day of Activity, ticketed event (Includes Box Office): **\$800**

*The daily fee for utilizing the facility covers a 24-hour period. The fee includes Box office and ticketing services, provided exclusively by the Ogle Center Box Office. Labor, equipment, performance fees, and taxes are not included. Facility usage includes:

- Lights, heat, open and close of building, dressing rooms, showers, cleaning of building
- General stage lighting
- Permanent House Audio System
- Podium, chairs, tables, stands (see equipment included in rental)
- Consultation with Ogle Center staff

ADDITIONAL REQUIRED CHARGES

Labor

- Technical **\$40** per person per hour
- Additional production staff at Union rate
- Security **\$40** per hour, *if determined necessary*
- Custodial **\$35** per hour, *if determined necessary*

ADDITIONAL OPTIONAL CHARGES

Ticketing

When events are ticketed, the university's contract with Ticketmaster requires use of Ticketmaster services.

The Ogle Center reserves the right to provide ticketing services for all public and private events held at the Ogle Center. All customary charges, including credit card commissions, ticket printing, and phone commissions are included in the Ticketing Setup Fee. The final decision as to when tickets will go on sale will be made by the Ogle Center Ticketing and Guest Services Manager in cooperation with Ticketmaster and the licensee.

Facility Fee: The Ogle Center collects a facility fee **from each ticket sale** for any event held at the Ogle Center and places it into a special reserve account. Funds in this account are used for facility capital purchases and improvements. The funds are also used to cover the costs of extraordinary repairs and maintenance. This fee (**\$2.00**) is built into the ticket price and is in addition to the Usage and Box Office charge mentioned above.

Lighting

- Additional lighting — 3-color wash (36 fixtures): **\$300**. Charge for each additional fixture beyond 36: **\$10**
- Follow Spots (2): **\$50** plus additional labor charges

Projector

- 12k laser projector with screen; projects image 30' x 24': **\$500**

Piano

- 9' Steinway Model D Grand: **\$200** per event
- **\$150** per piano tuning

Staging

- Wenger StageTek® staging: **\$50** per 4' x 8' section
- **\$50** per choral riser section

Tables and Linens

- Rented table linens: **\$8** each

Parking

- Visitor parking must be arranged through the Ogle Center. At this time there is no charge for visitor parking on campus.

Ask us about creating a custom estimate for your event.

Additional charges may apply, based on needs. All rental fees subject to change without notification.

Food and beverage items must be arranged through the **IU Southeast Office of Conference and Catering**. No outside food or beverages may be brought into the Ogle Center unless previously approved. Please call the IU Southeast Office of Conference and Catering at **(812) 941-2318** or visit ius.edu/diningservices for additional information.



THE OGLE CENTER at Indiana University Southeast

ROBINSON THEATER

Named in recognition of creative entrepreneurs James D. and Sarah T. Robinson. Robinson Theater has seating for 338 including 4 accessible seating locations.

RENTAL PRICE LIST

for individuals and organizations not affiliated with Indiana University

RENTAL RATES

8-Hour* Rental

\$1,000**

* Additional rental hours \$75 per hour or portion thereof.

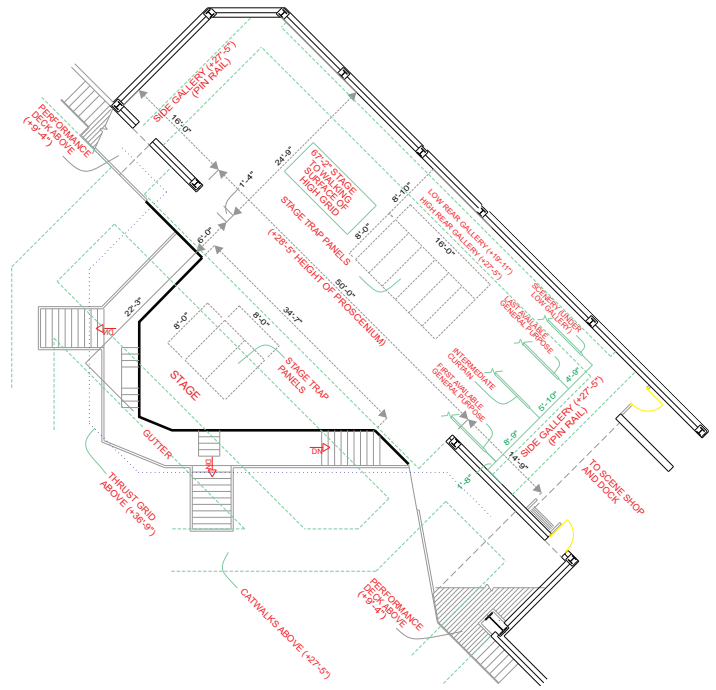
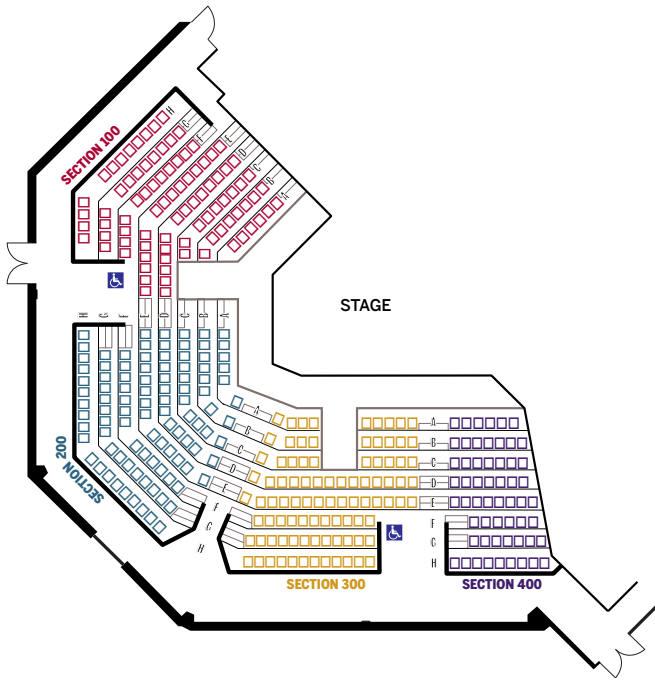
** Non-profit organizations receive 15% discount on rent with proof of Indiana State sales tax exemption (Form ST-105)

Equipment Included with Rental

- Standard stage lighting (no color wash)
- Eight (8) 8' rectangular tables
- Four (4) 6' rectangular tables
- 50 chairs for stage
- Limited number of music stands
- Gaffers tape (may be additional charge for excessive usage)
- Sound package includes two (2) SM58 handheld wireless microphones and two (2) monitors
- Lectern



See reverse for additional charges and options.



USAGE AND BOX OFFICE CHARGE*

Day of Activity, *non*-ticketed event: **\$500**

Day of Activity, ticketed event (Includes Box Office): **\$800**

*The daily fee for utilizing the facility covers a 24-hour period. The fee includes Box office and ticketing services, provided exclusively by the Ogle Center Box Office. Labor, equipment, performance fees, and taxes are not included. Facility usage includes:

- Lights, heat, open and close of building, dressing rooms, showers, cleaning of building
- General stage lighting
- Permanent House Audio System
- Podium, chairs, tables, stands (see equipment included in rental)
- Consultation with Ogle Center staff

ADDITIONAL REQUIRED CHARGES

Labor

- Technical **\$40** per person per hour
- Additional production staff at Union rate
- Security **\$40** per hour, *if determined necessary*
- Custodial **\$35** per hour, *if determined necessary*

ADDITIONAL OPTIONAL CHARGES

Ticketing

When events are ticketed, the university's contract with Ticketmaster requires use of Ticketmaster services.

The Ogle Center reserves the right to provide ticketing services for all public and private events held at the Ogle Center. All customary charges, including credit card commissions, ticket printing, and phone commissions are included in the Ticketing Setup Fee. The final decision as to when tickets will go on sale will be made by the Ogle Center Ticketing and Guest Services Manager in cooperation with Ticketmaster and the licensee.

Facility Fee: The Ogle Center collects a facility fee *from each ticket sale* for any event held at the Ogle Center and places it into a special reserve account. Funds in this account are used for facility capital purchases and improvements. The funds are also used to cover the costs of extraordinary repairs and maintenance. This fee (**\$2.00**) is built into the ticket price and is in addition to the Usage and Box Office charge mentioned above.

Lighting

- Additional lighting: **\$10** per fixture
- Follow Spots (2): **\$50** plus additional labor charges

Projector

- Projector with screen; projects image 8' x 6': **\$100**

Piano

- Upright piano: **\$100** per event
- **\$150** per piano tuning

Staging

- Wenger StageTek® staging: **\$50** per 4' x 8' section
- **\$50** per choral riser section

Tables and Linens

- Rented table linens: **\$8** each

Parking

- Visitor parking must be arranged through the Ogle Center. At this time there is no charge for visitor parking on campus.

Ask us about creating a custom estimate for your event.

Additional charges may apply, based on needs. All rental fees subject to change without notification.

Food and beverage items must be arranged through the **IU Southeast Office of Conference and Catering**. No outside food or beverages may be brought into the Ogle Center unless previously approved. Please call the IU Southeast Office of Conference and Catering at **(812) 941-2318** or visit ius.edu/diningservices for additional information.



THE OGLE CENTER at Indiana University Southeast

MILLICENT AND NORMAN STIEFLER RECITAL HALL

Named in recognition of friends and alumni of Indiana University, Millicent and Norman Stiefler. Stiefler Recital Hall has seating for 98 including 2 accessible seating locations.

RENTAL PRICE LIST

for individuals and organizations not affiliated with Indiana University

RENTAL RATES

8-Hour* Rental

\$400**

* Additional rental hours \$75 per hour or portion thereof.

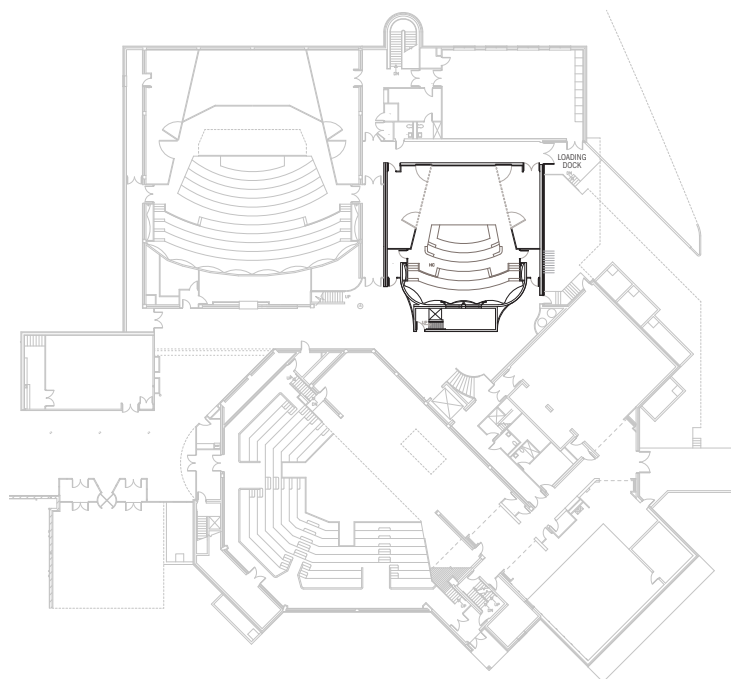
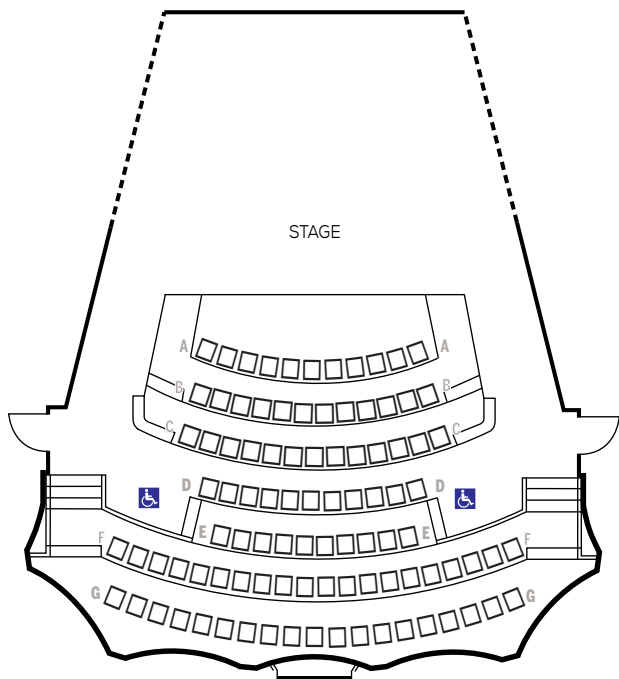
** Non-profit organizations receive 15% discount on rent with proof of Indiana State sales tax exemption (Form ST-105)

Equipment Included with Rental

- Standard stage lighting (no color wash)
- Four (4) 8' rectangular tables
- Four (4) 6' rectangular tables
- 25 chairs for stage
- 25 music stands
- Gaffers tape (may be additional charge for excessive usage)
- Sound package includes two (2) SM58 handheld wireless microphones and two (2) monitors
- Lectern



See reverse for additional charges and options.



USAGE AND BOX OFFICE CHARGE*

Day of Activity, *non*-ticketed event: **\$500**

Day of Activity, ticketed event (Includes Box Office): **\$800**

*The daily fee for utilizing the facility covers a 24-hour period. The fee includes Box office and ticketing services, provided exclusively by the Ogle Center Box Office. Labor, equipment, performance fees, and taxes are not included. Facility usage includes:

- Lights, heat, open and close of building, dressing rooms, showers, cleaning of building
- General stage lighting
- Permanent House Audio System
- Podium, chairs, tables, stands (see equipment included in rental)
- Consultation with Ogle Center staff

ADDITIONAL REQUIRED CHARGES

Labor

- Technical **\$40** per person per hour
- Additional production staff at Union rate
- Security **\$40** per hour, *if determined necessary*
- Custodial **\$35** per hour, *if determined necessary*

ADDITIONAL OPTIONAL CHARGES

Ticketing

When events are ticketed, the university's contract with Ticketmaster requires use of Ticketmaster services.

The Ogle Center reserves the right to provide ticketing services for all public and private events held at the Ogle Center. All customary charges, including credit card commissions, ticket printing, and phone commissions are included in the Ticketing Setup Fee. The final decision as to when tickets will go on sale will be made by the Ogle Center Ticketing and Guest Services Manager in cooperation with Ticketmaster and the licensee.

Facility Fee: The Ogle Center collects a facility fee *from each ticket sale* for any event held at the Ogle Center and places it into a special reserve account. Funds in this account are used for facility capital purchases and improvements. The funds are also used to cover the costs of extraordinary repairs and maintenance. This fee (**\$2.00**) is built into the ticket price and is in addition to the Usage and Box Office charge mentioned above.

Lighting

- Additional lighting: **\$10** per fixture
- Follow Spots (2): **\$50** plus additional labor charges

Projector

- Projector with screen; projects image 8' x 6': **\$100**

Piano

- Upright piano: **\$100** per event
- **\$150** per piano tuning

Staging

- Wenger StageTek® staging: **\$50** per 4' x 8' section
- **\$50** per choral riser section

Tables and Linens

- Rented table linens: **\$8** each

Parking

- Visitor parking must be arranged through the Ogle Center. At this time there is no charge for visitor parking on campus.

Ask us about creating a custom estimate for your event.

Additional charges may apply, based on needs. All rental fees subject to change without notification.

Food and beverage items must be arranged through the **IU Southeast Office of Conference and Catering**. No outside food or beverages may be brought into the Ogle Center unless previously approved. Please call the IU Southeast Office of Conference and Catering at **(812) 941-2318** or visit ius.edu/diningservices for additional information.